



IRI NextForm
Data, File & Database Migration

- Find and Profile Data Silos
- Modernize Mainframe Files
- Migrate and Replicate RDBs
- Remap, Federate and Report

Changing Data for Changing Environments



Product Summary

What Does NextForm Do?

IRI NextForm is a multi-edition data and database migration package that is designed to rapidly:

- Discover and classify data in database, file, and semi/unstructured data sources
- Map data between structured (legacy) and unstructured (modern) platforms
- Migrate column data, layouts, and relationships (constraints) between databases
- Replicate, or copy, data from one or more sources to similar or different targets
- Federate, or virtualize, data by producing ad hoc views
- Convert data types, record layouts, file formats, and endianness
- Migrate database schemas (e.g. relational to star)
- Generate custom reports or create filtered hand-offs for BI tools
- Produce database subsets for testing and replication

Which NextForm Edition Do You Need?

NextForm is available in different packages based on your data sources and migration goals:

<p>Lite <i>Featuring NextForm executable and IRI Workbench (Eclipse GUI)</i></p> <p>Migrate, replicate, federate, and report on flat files. Convert fixed to delimited, LDIF to CSV, EBCDIC to ASCII, big to little endian, etc.</p>	<p>COBOL <i>Featuring Lite + MF Libraries</i></p> <p>Convert MF-ISAM & Vision Files, MF & RM data types. Report from and re-use mainframe data sets.</p>
<p>DBMS <i>Featuring Lite + ODBC Libraries</i></p> <p>Replicate, federate, and report against data in any connected table or flat file. Upgrade or migrate from/to Oracle, DB2, Sybase, MySQL, PostgreSQL, MS SQL Server, Snowflake, Teradata, HIVE, and other RDBs.</p>	<p>Legacy <i>Featuring Lite + Proprietary Drivers</i></p> <p>Access and view legacy data in over 120 different formats.</p>
<p>Modern <i>Featuring Lite + Proprietary Drivers</i></p> <p>Access and migrate data in Hadoop, NoSQL, cloud, and SaaS repositories.</p>	<p>Premium <i>Featuring Lite + All Libraries</i></p> <p>Identify, integrate, use, and report on structured, semi-structured, and unstructured data.</p>

What are the Advantages of NextForm?

Speed - NextForm uses the IRI CoSort engine for rapid data movement and manipulation. Convert massive file and table data fast, and reformat it in highly customized ways.

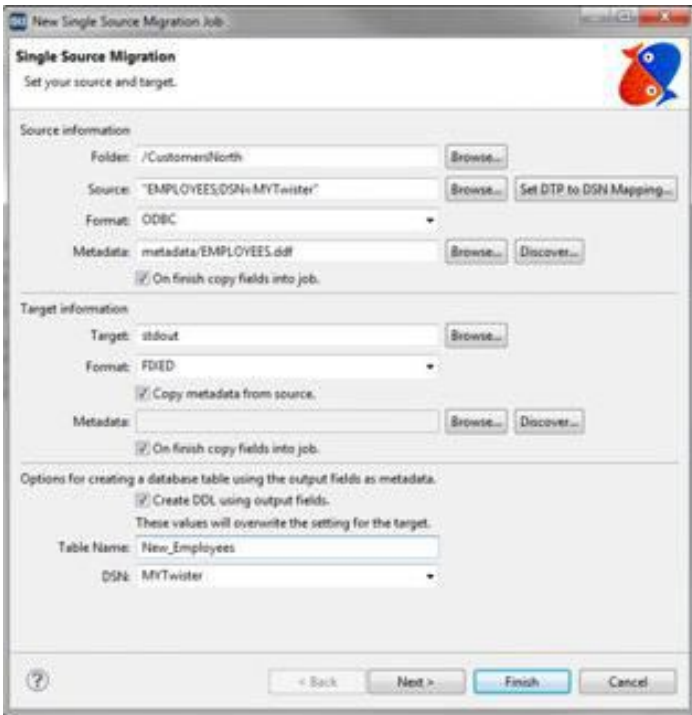
Ease of Use - NextForm is supported in an Eclipse GUI called IRI Workbench. Simple metadata discovery and format conversion wizards quickly step you through data and reformat definitions. The GUI creates text scripts you can modify, schedule, and run anywhere.

Versatility - NextForm handles table, file, record, and layout changes. It supports all popular databases, more than a dozen sequential file formats, unstructured documents, and over 100 data types. The NextForm data definition file (.ddf) format is also supported by erwin Mapping Manager and Meta Integration Model Bridge (MIMB) so you can rapidly create migration jobs with metadata already defined for the third-party ETL, modeling, and reporting tools they support.

Value - NextForm bundles robust data discovery, subsetting, and reporting features in its Eclipse GUI, and auto-generates portable job scripts you can expand upon functionally with a CoSort product, or IRI Voracity platform, license.

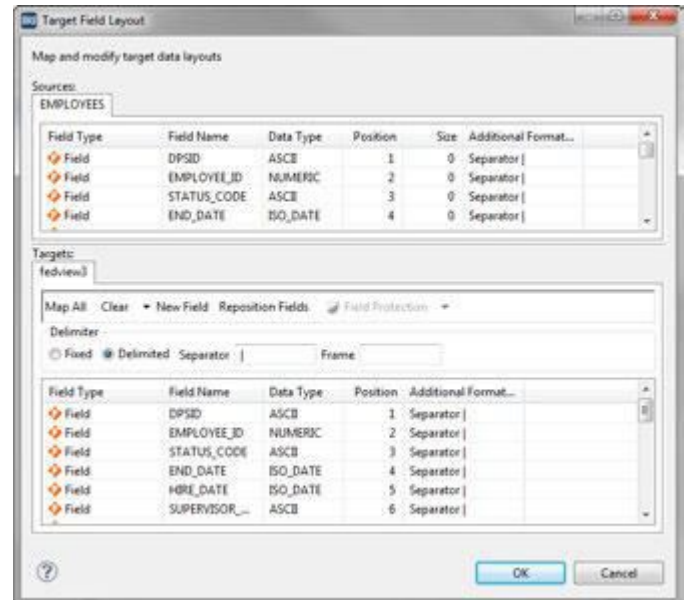
Convert

NextForm can help you change the format, record layout, data types, and endianness of your data sources.



Replicate

Connect to disparate data sources, select the contents you need, and copy the values to one or more targets in the same or different format.

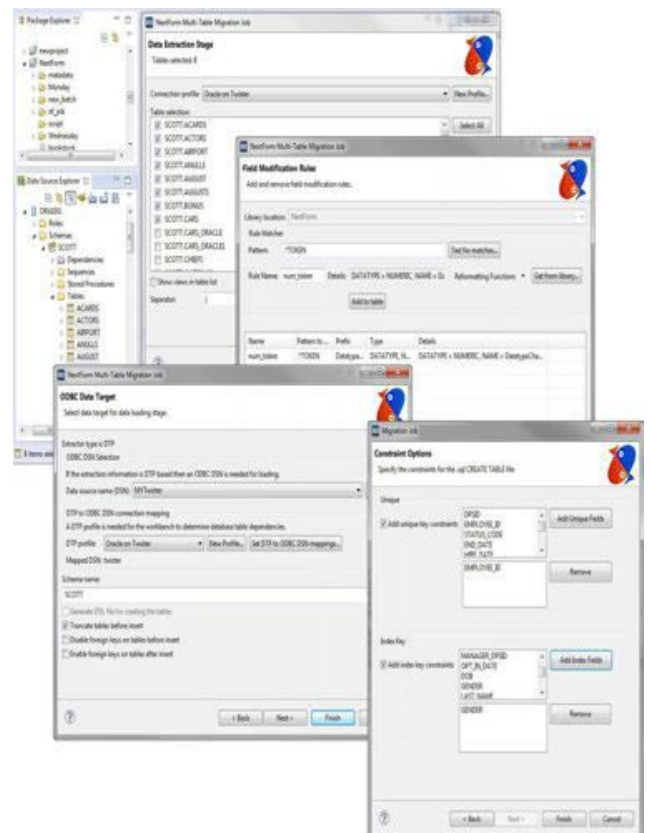
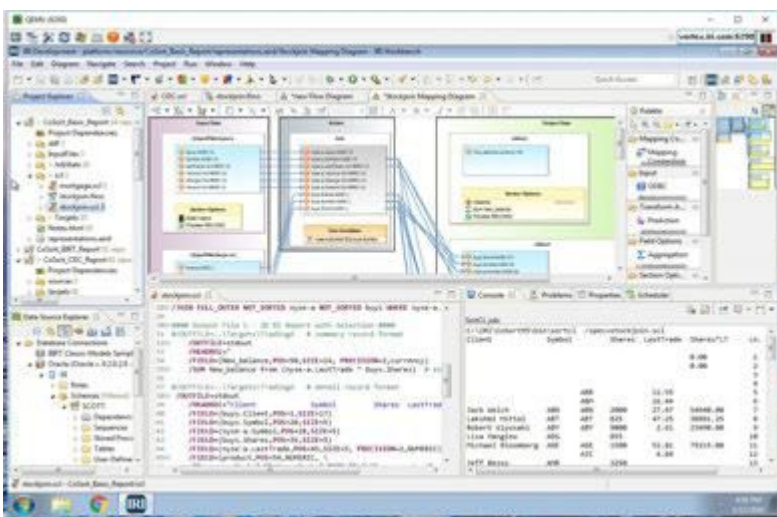


Migrate

NextForm can connect to DB tables, apply mapping rules and constraints, and create and populate new tables.

Report & Virtualize

Make virtual datasets, or federated views, with NextForm by connecting to and defining the metadata of your sources, and then producing ad hoc table or custom report targets.



Supported Inputs

Apply and view your data in new ways ... in new files and tables, custom reports, BI tools, virtualized views, and more. NextForm works with these, and other:

Flat Files

- CSV / Delimited
- Excel (XLS/X)
- Fixed
- JSON
- LDIF
- Micro Focus Variable Length
- Micro Focus ISAM
- Line/Rec/Var Sequential
- Variable Blocked
- Text
- Vision
- XML

Data Types

- ASCII (c types)
- Numerics (All)
- EBCDIC MF COBOL
- EBCDIC RM COBOL
- Dates & Time Stamps
- Composite
- Single-Byte
- Multi-Byte (CJK, Thai)
- Unicode
- Packed Decimal
- Zoned Decimal

Legacy Sources

- Adabas
- C-ISAM Informix, D-ISAM
- Datacom
- DataFlex
- dBase
- IDMS
- IMS
- Intersystems
- PostgreSQL
- Powerhouse
- Unidata

Unstructured Files

- ASN.1 TAP3
- .DOC, .DOCX
- .EML, .OST, .PST
- .PDF, .RTF
- .PPT, .PPTX
- .TXT, .XML
- .XLS, .XLSX

RDBMS

- Oracle
- DB2 UDB, i & z
- MySQL
- SAP HANA
- SQL Server
- Snowflake
- Sybase
- Teradata

Modern Sources

- Amazon EMR, RDS, etc.
- Cloudera CDH & Impala
- Hortonworks Hive
- NoSQL (Cassandra, Couchbase, MongoDB)
- Pivotal (Greenplum, Hive)
- Spark SQL
- Web-based (Eloqua, Hubspot, Marketo, Salesforce, etc.)

Compatible Applications

NextForm uses the same metadata metadata as other IRI software. Your source and target data definition are ready for use in any IRI software application and the IRI Workbench GUI, built on Eclipse™. Third-party metadata mapping tools also support NextForm's data layout and manipulation syntax.

- erwin - Mapping Manager
- IRI CoSort - Data Integration & Transformation
- IRI FACT - Fast Extract for Oracle, DB2, et al.
- IRI FieldShield - Data Masking
- IRI RowGen - Referentially Correct Test Data
- IRI Voracity - Total Data Management
- MITI - Meta Integration Model Bridge



© 2021 Innovative Routines International (IRI), Inc. All Rights Reserved. CoSort, Voracity, NextForm, FieldShield, CellShield, DarkShield, and RowGen are trademarks or registered trademarks of IRI. FACT is a trademark of DataStreams Corp. (CoSort Korea). Other product, brand, or company names may be (registered) trademarks of their respective holders.

2194 Highway A1A
Melbourne, FL 32937 USA
1.321.777.8889 * 1.800.333.SORT



iri.com/nextform